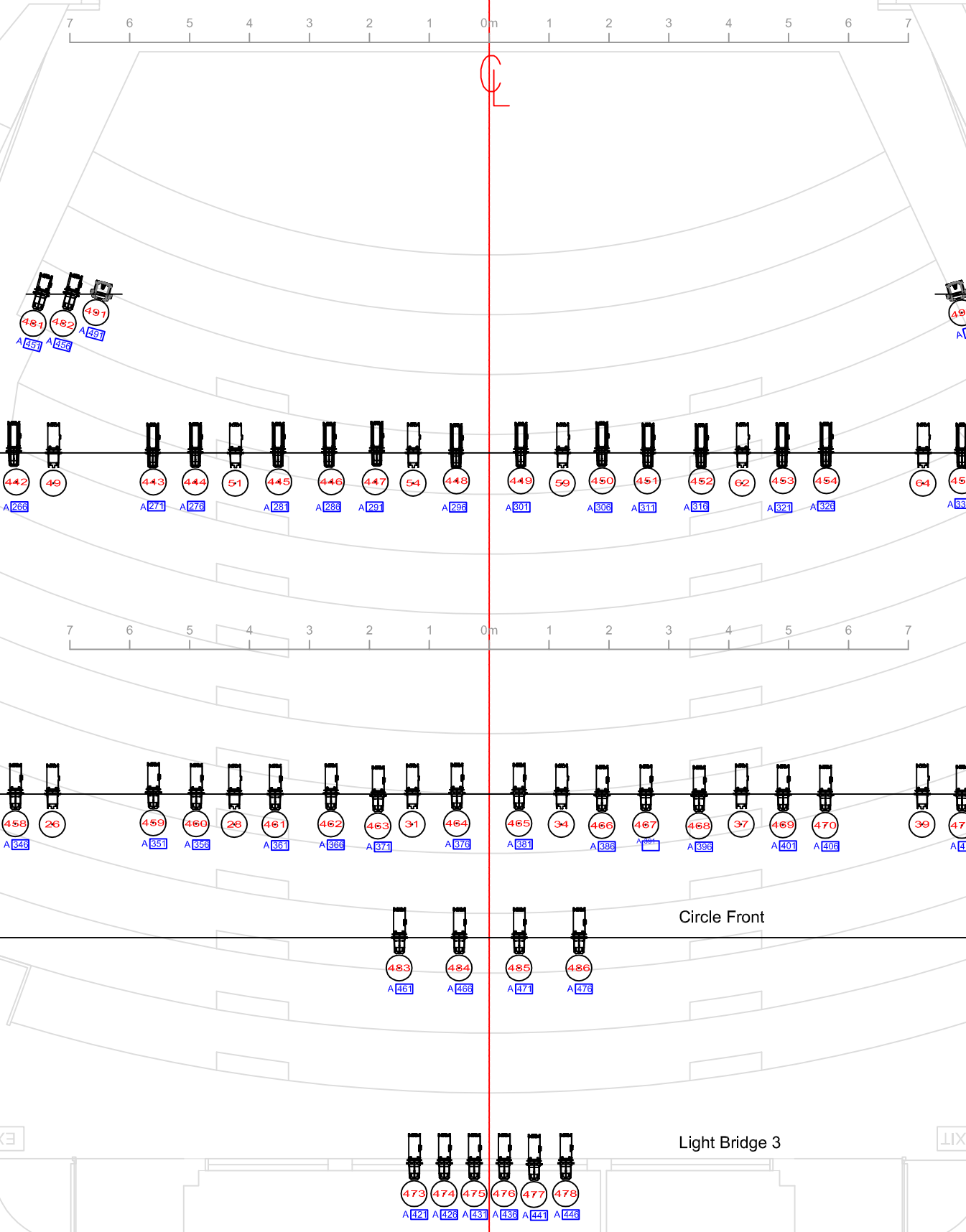


- 40. Black Backdrop
- 38. Cyclorama
- 37.
- 36.
- 35.
- 34. Lx 4 CYC Light
- 33.
- 32.
- 31.
- 30. Legs 3
- 29. Border 4
- 28. Obstructed by the Lx bar 3
- 27. Lx 3
- 25. Obstructed by the Acoustic Shell
- M24. Acoustic Shell 3
- 23.
- 22. Mid Blue Curtain(as Legs 3)
- 21.
- 20. Border 3
- 19. Obstructed by the Lx bar 2
- 18. LX 2
- 17. Obstructed by the Lx bar 2
- 16.
- 15. Legs 2
- 14. Border 2
- M13. Acoustic Shell 2
- 12.
- 10.
- 9.
- M8.
- 7. Legs 1
- 6. Border 1
- 5. Obstructed by the Acoustic Shell
- 4. Lx 1
- M3. Rigging point for Acoustic Shell 1
- M2.
- M1. Main Blue Curtain
- Tommentor
- Teaser



**Youth Square - Y Theatre**  
**General Lighting Plan**  
 Date: July 2018  
 Not in Scale

Legend	
	Altmen LED CYC wash, Qty.: 6
	Wildfire LED UV, Qty.: 2
	Chroma-Q Color ONE 100X, Qty.: 7
	DMX address
	Channel number
	ETC 750 S4 15/30°, Qty.: 12
	ETC LED S4 25/50°, Qty.: 4
	ETC LED S4 15/30°, Qty.: 54
	Selecon Rama 1kW Fresnel, Qty.: 12
	ETC LED S4 Fresnel, Qty.: 27